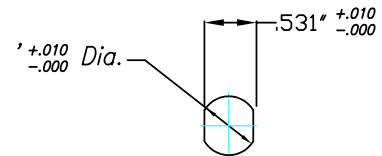
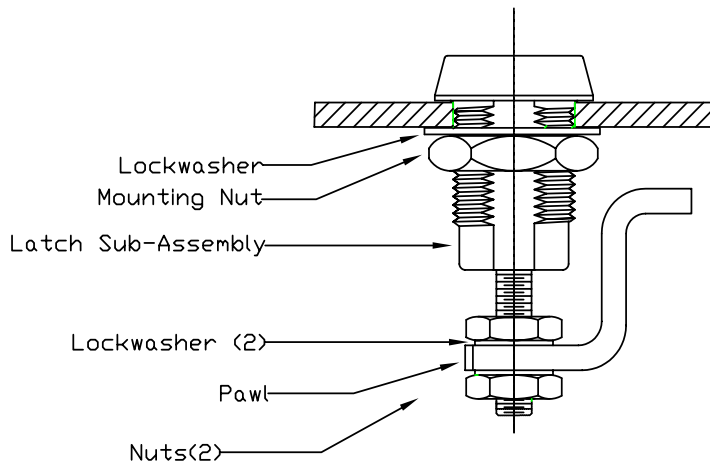


1) Pawl, Nuts, and Lockwashers Are Shipped Unassembled In Bag With Latch Sub-Assembly.

2) Installation: Secure Latch Sub-Assembly In Door With Large Lock-Washer And Hex Nut. Place Pawl, Nuts And Lockwashers On Shaft And Adjust To Required Grip In Latched Position. Tighten Nuts Securely.

3) Operate With Key Part # E3-26-819-19 (95646). 195° Turn of Cap Causes Pawl To Rotate 80° And Pull Up 4.3mm.

4) If Required, The Small Lockwashers May Need To Be Removed To Facilitate The Proper Amount of Grip.



Cutout Detail